

- REFER PROJECT DRAWING 403 FOR LEGEND

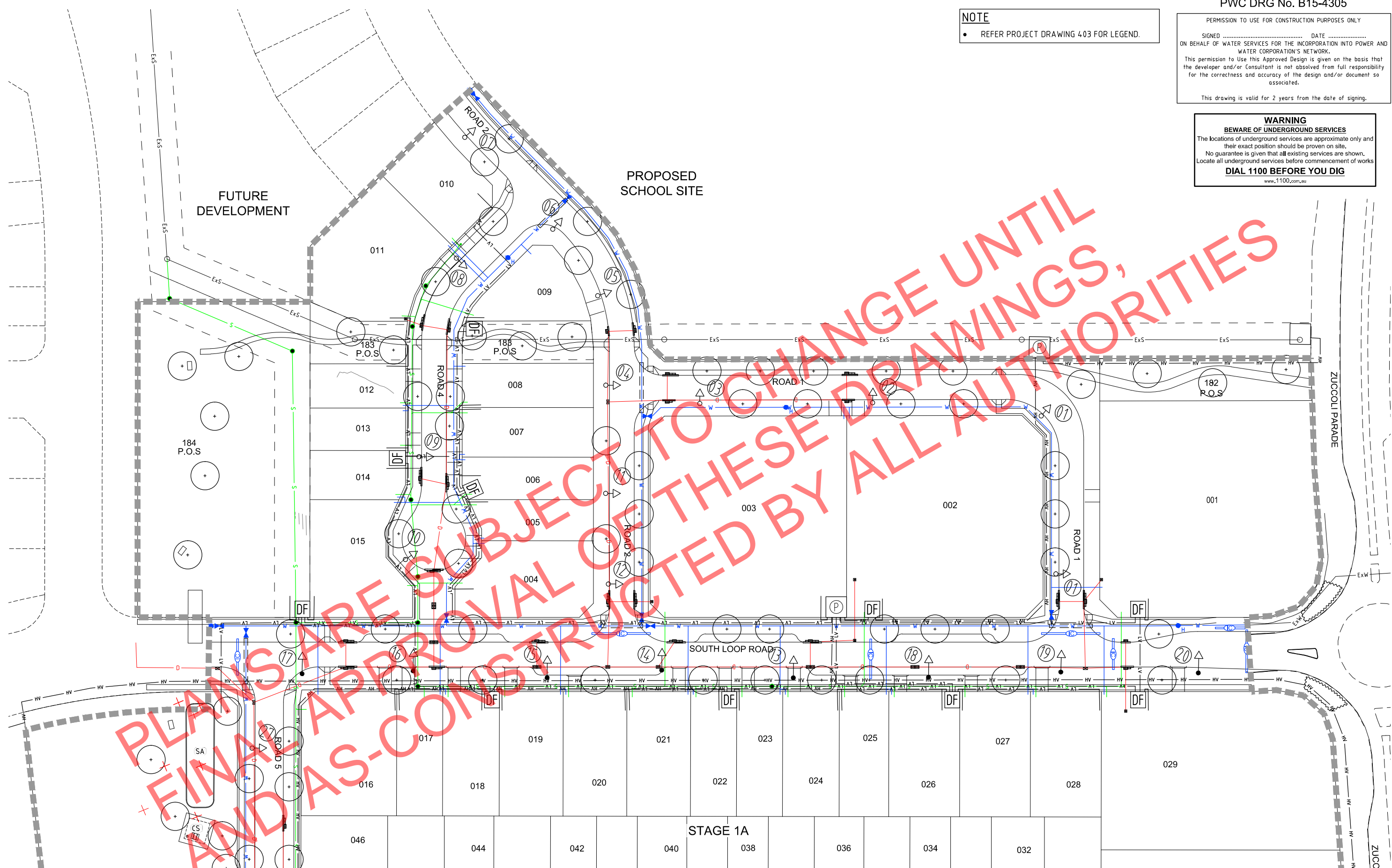
**BEWARE OF UNDERGROUND SERVICES**

The locations of underground services are approximate only and their exact position should be proven on site.

No guarantee is given that all existing services are shown. Locate all underground services before commencement of works

**DIAL 1100 BEFORE YOU DIG**

[www.1100.com.au](http://www.1100.com.au)



FOR CONTINUATION REFER TO DWG 30080027E-01-402 (B15-4306)

A	Issued for Construction	07/10/15	GW	SF
REVISION		DATE	DES/DFT	APPD

Principal  
Costojic Pty Ltd

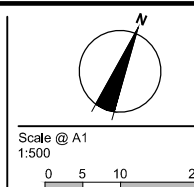
PERMISSION TO USE FOR CONSTRUCTION PURPOSES  
ROADWORKS AND STORMWATER DRAINAGE

SIGNED ..... DATE .....

DIRECTOR OF TECHNICAL SERVICES  
CITY OF PALMERSTON

This permission to use is given on the basis that the Developer and/or Consultant is not absolved from full responsibility for the correctness and accuracy of the design and/or associated documents. This permission is valid for a period of two years from the date of signed approval.

Project Leader  
S. Fraser  
Designed  
G. Wilkin  
Drawn  
G. Wilkin  
Checked  
G. Wilkin  
Authorised  
S. Fraser  
Date  
April 2015



© SMEC Australia Pty Ltd  
ABN 47 065 475 149

These designs and drawings are the copyright of SMEC Australia Pty Ltd. The drawing shall not be reproduced or copied, in whole or part, without the written permission of SMEC Australia Pty Ltd. The contents of this drawing are electronically generated, are confidential and may only be used for the purpose for which they are intended.



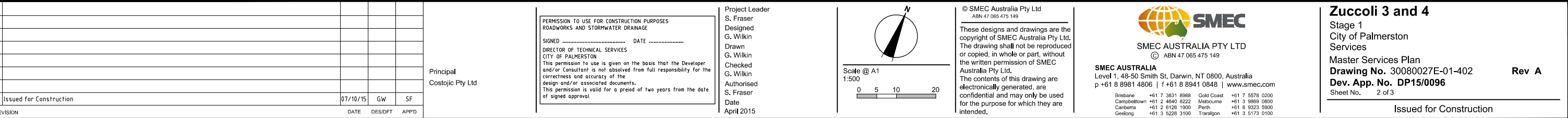
**SMEC AUSTRALIA**  
Level 1, 48-50 Smith St, Darwin, NT 0800, Australia  
p +61 8 8981 4806 | f +61 8 8941 0848 | [www.smeccom.com](http://www.smeccom.com)

Brisbane	+61 7 3831 8988	Gold Coast	+61 7 5578 0200
Campbelltown	+61 2 4640 8222	Melbourne	+61 3 9869 0800
Canberra	+61 2 6126 1900	Perth	+61 8 9323 5900
Geelong	+61 3 5228 3300	Traaloon	+61 3 6173 0100

**Zuccoli 3 and 4**  
 Stage 1  
 City of Palmerston  
 Services  
 Master Services Plan  
**Drawing No.** 30080027E-01-401  
**Dev. App. No.** DP15/0096  
 Sheet No. 1 of 3

**Rev A**

Issued for Construction



This drawing is valid for 2 years from the date of signing

**SMEC AUSTRALIA**  
Level 1, 48-50 Smith St, Darwin, NT 0800, Australia  
p +61 8 8981 4806 | f +61 8 8941 0848 | [www.smeccom.com](http://www.smeccom.com)

Brisbane	+61 7 3831 8988	Gold Coast	+61 7 5578 0200
Campbelltown	+61 2 4640 8222	Melbourne	+61 3 9869 0800
Canberra	+61 2 6126 1900	Perth	+61 8 9323 5900
Geelong	+61 3 5228 3100	Traralgon	+61 3 5173 0100

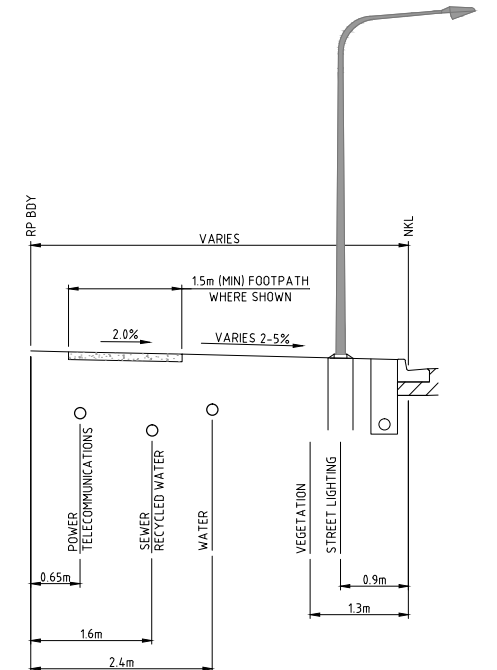
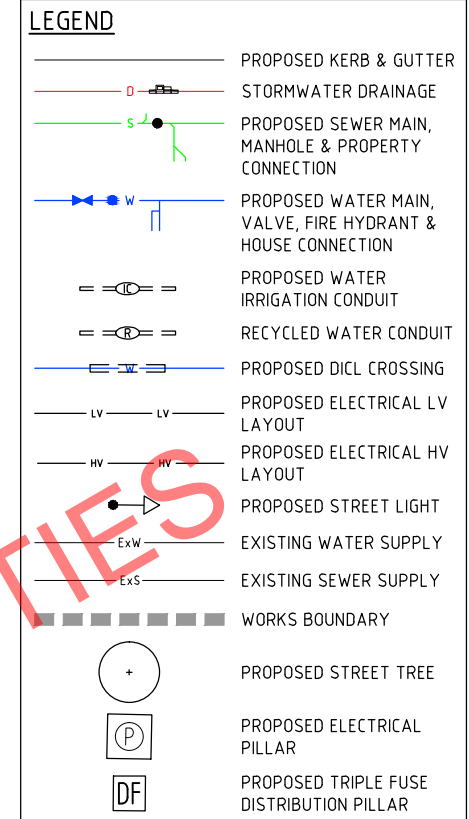
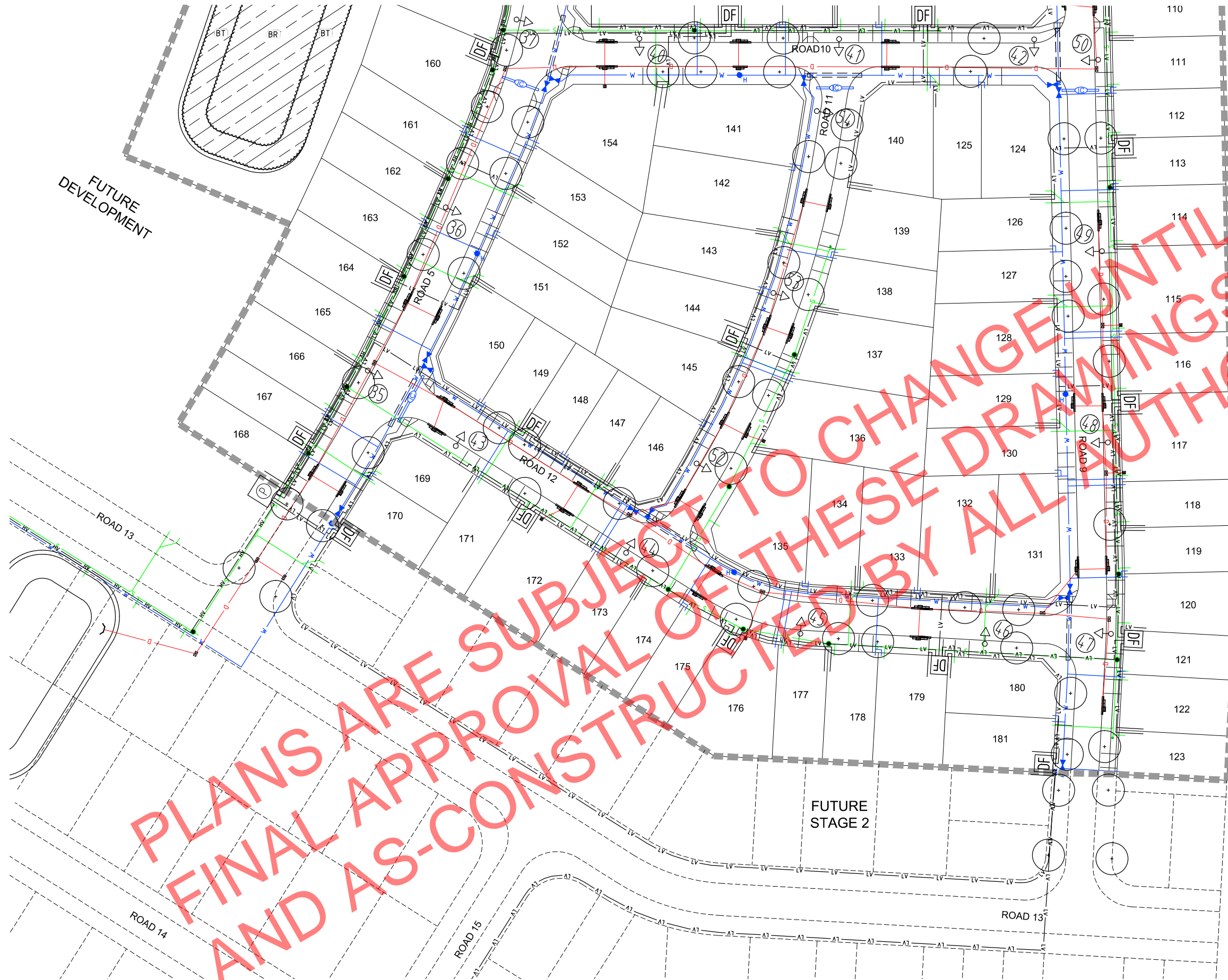
**Zuccoli 3 and 4**  
Stage 1  
City of Palmerston  
Services  
Master Services Plan  
**Drawing No.** 30080027E-01-402  
**Rev. App. No.** DP15/0096  
Sheet No. 2 of 3

---

Issued for Construction



FOR CONTINUATION REFER TO DWG 30080027E-01-402 (B15-4306)



**TYPICAL ROAD RESERVE SERVICE TRENCH DETAIL**  
1:50

**PWC DRG No. B15-4307**

PERMISSION TO USE FOR CONSTRUCTION PURPOSES ONLY

SIGNED ..... DATE .....  
ON BEHALF OF WATER SERVICES FOR THE INCORPORATION INTO POWER AND WATER CORPORATION'S NETWORK.  
This permission to Use this Approved Design is given on the basis that the developer and/or Consultant is not absolved from full responsibility for the correctness and accuracy of the design and/or document so associated.

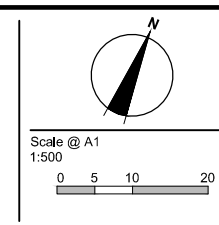
This drawing is valid for 2 years from the date of signing.

REVISION	DATE	DES/DT	APPD
A	07/10/15	GW	SF
Issued for Construction			

Principal  
Costojic Pty Ltd

PERMISSION TO USE FOR CONSTRUCTION PURPOSES  
ROADWORKS AND STORMWATER DRAINAGE  
SIGNED ..... DATE .....  
DIRECTOR OF TECHNICAL SERVICES  
CITY OF PALMERSTON  
This permission to use is given on the basis that the Developer and/or Consultant is not absolved from full responsibility for the correctness and accuracy of the design and/or associated documents.  
This permission is valid for a period of two years from the date of signed approval

Project Leader  
S. Fraser  
Designed  
G. Wilkin  
Drawn  
G. Wilkin  
Checked  
G. Wilkin  
Authorised  
S. Fraser  
Date  
April 2015



© SMEC Australia Pty Ltd  
ABN 47 065 475 149  
These designs and drawings are the copyright of SMEC Australia Pty Ltd. The drawing shall not be reproduced or copied, in whole or part, without the written permission of SMEC Australia Pty Ltd.  
The contents of this drawing are electronically generated, are confidential and may only be used for the purpose for which they are intended.

**SMEC AUSTRALIA**  
Level 1, 48-50 Smith St, Darwin, NT 0900, Australia  
p +61 8 8981 4806 | f +61 8 8941 0848 | www.smec.com  
Brisbane +61 7 3631 8888 Gold Coast +61 7 5578 0200  
Campbelltown +61 2 4640 8222 Melbourne +61 3 9869 0800  
Canberra +61 2 6126 1900 Perth +61 8 9323 5900  
Geelong +61 3 5228 3100 Traralgon +61 3 5173 0100

**Zuccoli 3 and 4**  
Stage 1  
City of Palmerston  
Services  
Master Services Plan  
Drawing No. 30080027E-01-403  
Dev. App. No. DP15/0096  
Sheet No. 3 of 3  
Issued for Construction